

Innovative Industrial Solutions

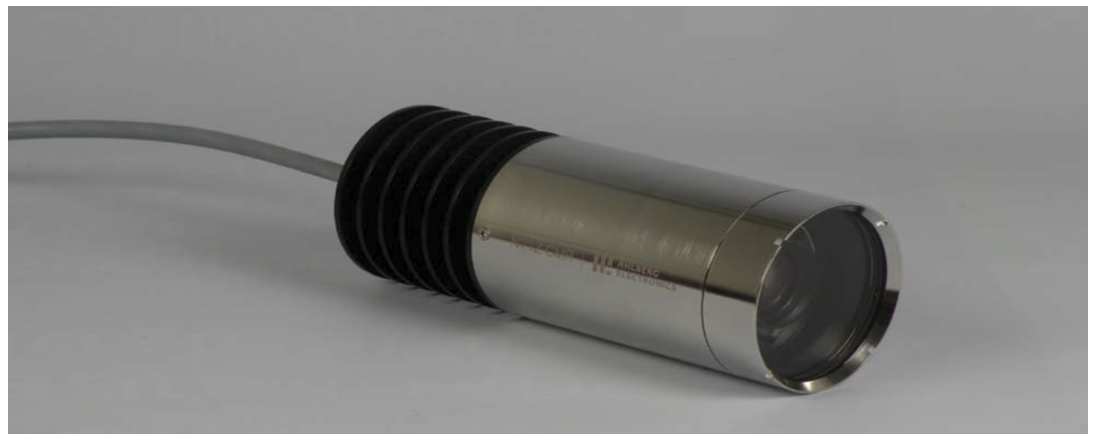


I.I.S.

N71Z

Radiation Hardened Color CCTV Camera

The N71Z CMR is a radiation hardened, color camera with an auto focused x10 optical (x10 digital giving x100). The camera features a low light sensitivity high resolution image with excellent color reproduction. It's designed for CCTV use in high radiation areas.



The N71Z CMR is built with modular design with the camera electronics and optical part integrated for easy maintenance, meaning that no adjustments are required after replacing used camera modules. The N71Z CMR is in many applications an ideal replacement for the monochrome tube cameras.

Innovative Industrial Solutions, Inc.

2830 Skyline Drive Russellville, AR 72802

Phone (479) 968-4266

Fax (479) 890-9072

www.i-i-s.net

Innovative Industrial Solutions



I.I.S.

N71Z

Benefits

- Radiation tolerant color camera
- High resolution – 720 TV-lines
- Low light sensitivity
- Powerful optical zoom
- Easy maintenance
- Halogen free and flame retardant cable

Features

- Auto-focus zoom color camera
- Zoom x10 optical and x10 digital giving x100
- Minimum illumination 10 lux
- S-Video or composite output (factory preset)
- Resolution 720 TV-lines
- Remote control for zoom, focus (automatic or manual) and iris (automatic or manual).
- Compatible with the H85DC Pan & Tilt unit

Technical data

Housing material	Stainless steel SS2333
Maximum temperature	104° F Surrounding temperature
Protection Class	IP65
Dose rate	up to 50 000 rad/h, (5x10 ² Gy) (1,3x10 ⁵ Gy)
Total dose	130 000 rad
Front glass	High-resolution lens protection quartz glass
Horizontal angle of view-	aprox 50° (wide end), aprox 5° (tele end)
High resolution wide angle lenses	x0.5, x0.4, x0.3 and x0.24 (option)
Communication protocol	AE CCTV (communication circuit board reprogramming, option) RS485/RS422 Adaptable to Various protocols



N71Z CMR

Innovative Industrial Solutions, Inc.

2830 Skyline Drive Russellville, AR 72802

Phone (479) 968-4266

Fax (479) 890-9072

www.i-i-s.net