

I.I.S.

## Electronic Survey

Networking your radiation and contamination survey program with wireless data entry

The Paperless Survey System is a network system, in a Client Server format used to Document, Review, Retrieve, and Archive Radiological Survey Records.

Survey is a User Friendly software package, Developed by RP technicians for RP technicians.

I.I.S.

## Electronic Survey

Mapping Module

Key System Features Bells and Whistles

- Threshold Setting Capability, providing Tech. ALERTS
- Integrated Search Engine
- Required survey points
- One-Line Survey Format
- Blow up view
- Logon Hierarchy
- Status Board
- Live time display of ARM and CAM data on survey and Status Board.

Significant Assetts

No more: Lost Surveys, write overs' or missed critical survey data

Auto Update

# Innovative Industrial Solutions

I.I.S.

## Electronic Survey

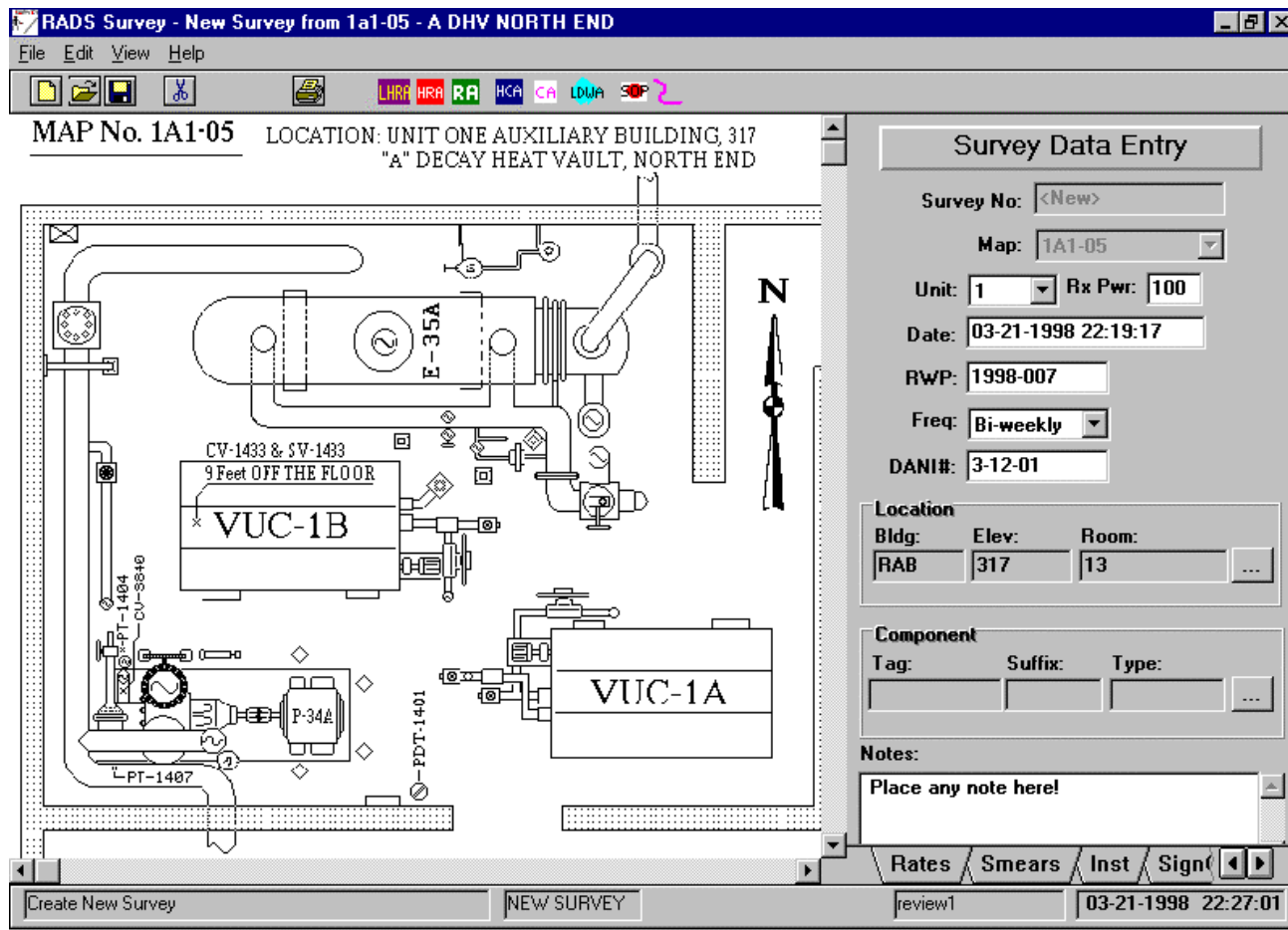
### Paperless Survey System

- Three Layer Format

Base image format, Tiff, Giff, Bmp, jpeg, etc

Template Overlay for static data Survey Information for transient data

- WMS Data Base Link
- Telemetry System Link



Innovative Industrial Solutions, Inc.

2830 Skyline Drive Russellville, AR 72802

Phone (479) 968-4266

Fax (479) 890-9072

www.i-i-s.net

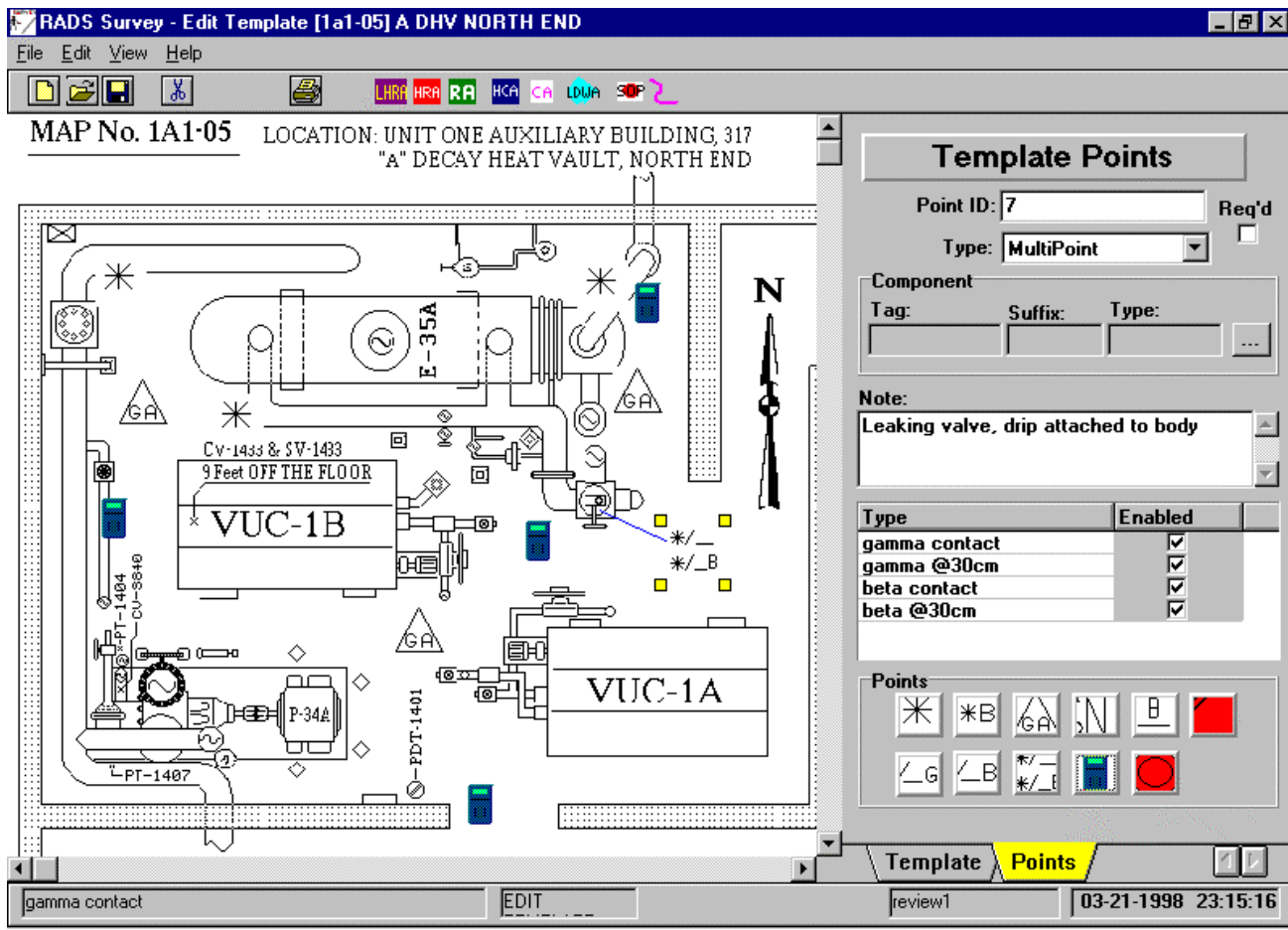
# Innovative Industrial Solutions

I.I.S.

## Electronic Survey

### Template Design Screen

- Allows the placement of Required Radiation Survey Points
- Identify static conditions such as shield sites or long term High Radiation Areas
- Provide display of Telemetry data live time right on map, (continuous or snap shot)



Innovative Industrial Solutions, Inc.

2830 Skyline Drive Russellville, AR 72802

Phone (479) 968-4266

Fax (479) 890-9072

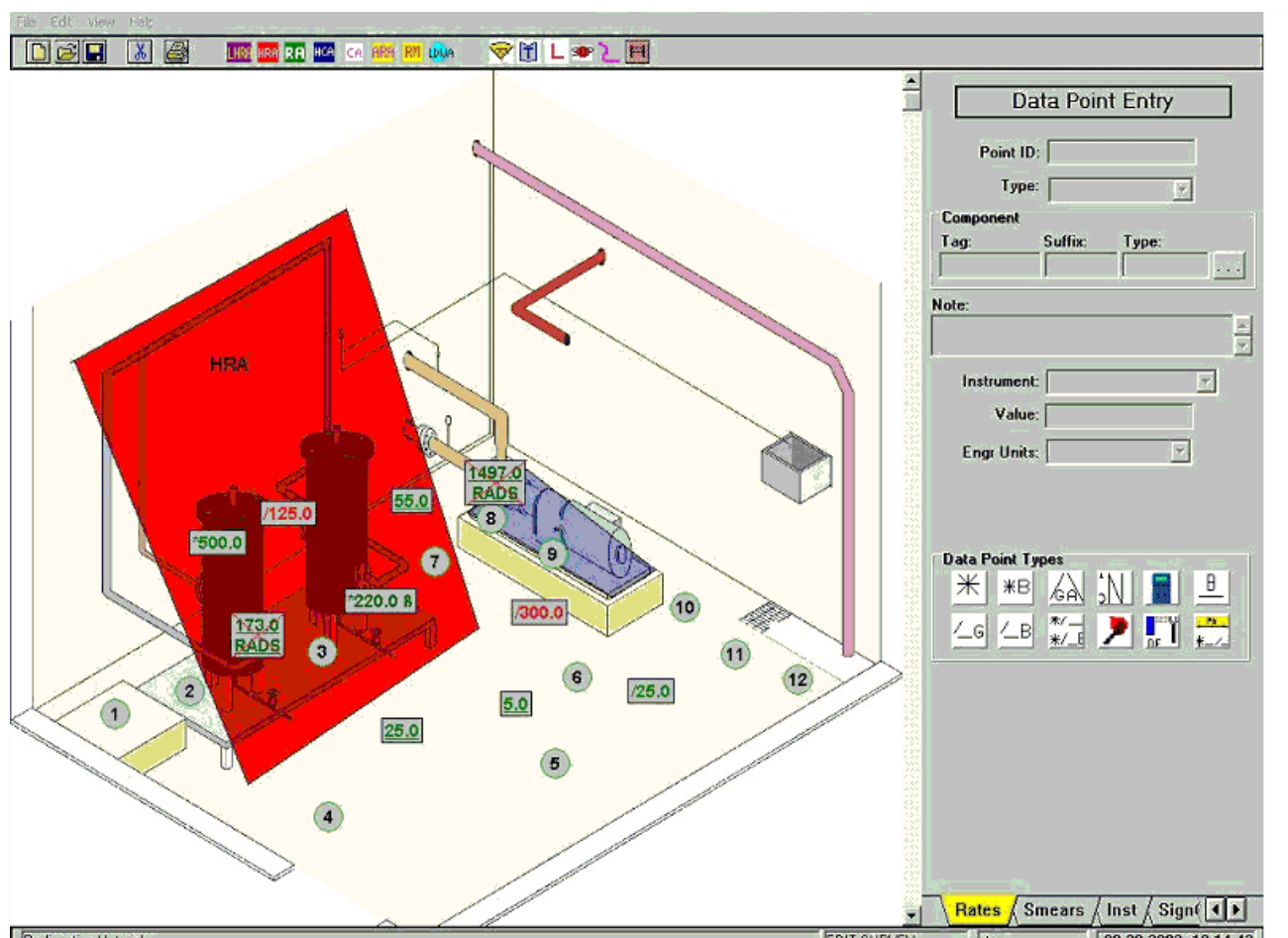
www.i-i-s.net

# Innovative Industrial Solutions

I.I.S.

## Electronic Survey

- Completed Survey with color graphics
- Color scheme can be changed to meet your needs



Innovative Industrial Solutions, Inc.

2830 Skyline Drive Russellville, AR 72802

Phone (479) 968-4266

Fax (479) 890-9072

[www.i-i-s.net](http://www.i-i-s.net)



# Innovative Industrial Solutions

I.I.S.

## Electronic Survey

Welcome Screen - Alerts User of Survey Status

**RADS Survey Document System**

File Edit View Help

**Survey Reminder**

Good Morning, Survey1, Joe J.

You have 2 surveys waiting for Re-Work  
You have 11 surveys In-Progress

OK

**Survey Data Entry**

Survey No:

Map:

Unit:  Rx Pwr:

Date:

RWP:

Freq:

DANI#:

**Location**

Bldg:  Elev:  Room:

**Component**

Tag:  Suffix:  Type:

**Notes:**

Survey Rates Smears In

Login Successfull - READY IDLE survey1 04-20-2000 10:13:33

Start Inbox - Microsoft Outlook ACT! - [All - Contacts] Microsoft PowerPoint - [RA... RADS Survey Docum...

Innovative Industrial Solutions, Inc.

2830 Skyline Drive Russellville, AR 72802

Phone (479) 968-4266

Fax (479) 890-9072

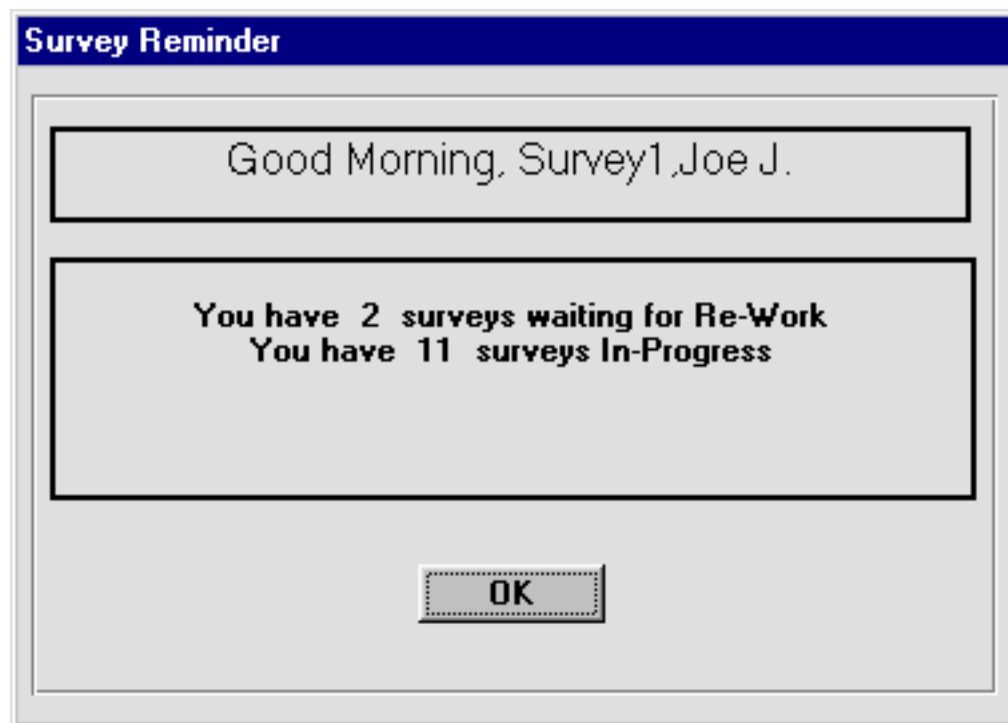
www.i-i-s.net

I.I.S.

## Electronic Survey

### Survey Reminder

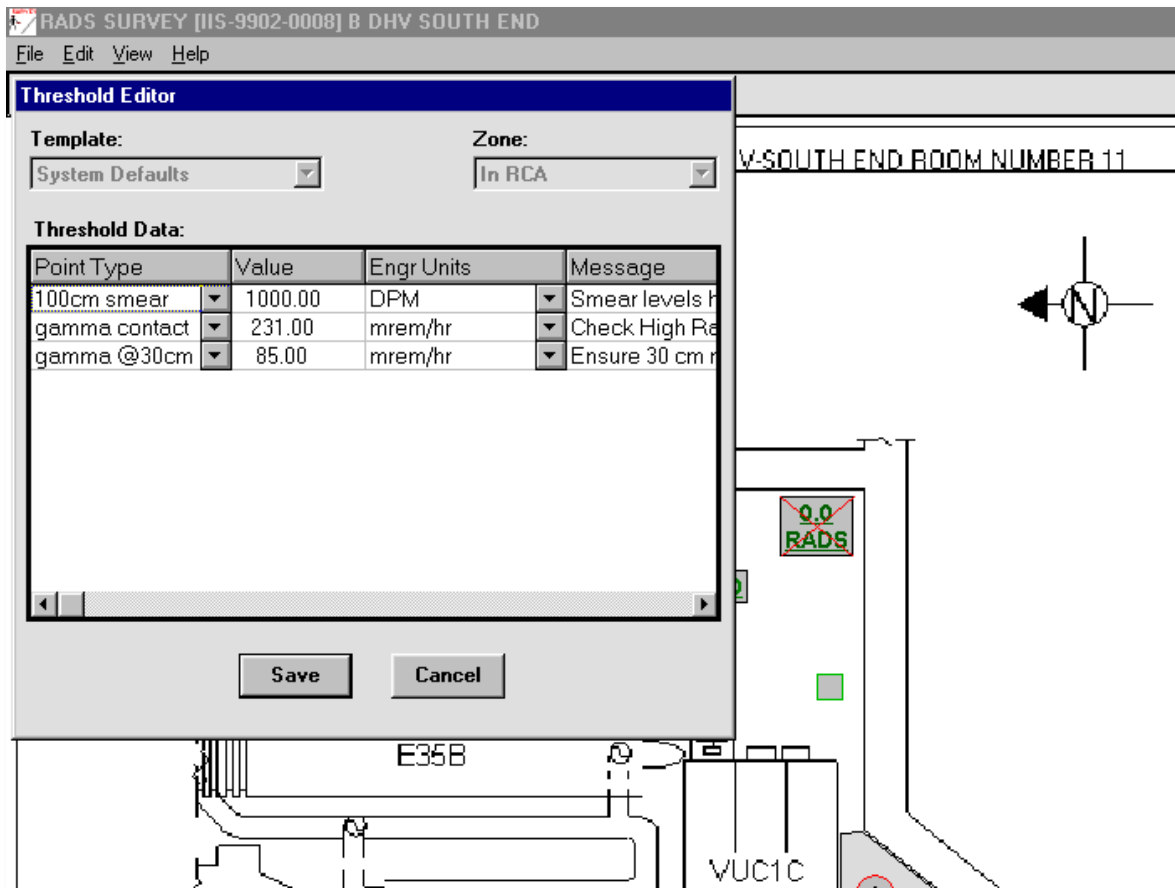
Each Logon is greeted with a message informing the Tech of the status of In-Progress surveys and surveys waiting Re-Work.



I.I.S.

## Electronic Survey

- Threshold Value settings
- Sets the value that when exceeded, values are highlighted in red and reminder messages are displayed for the technician
- Values can be set for each map/template, or for the whole system



Innovative Industrial Solutions, Inc.

2830 Skyline Drive Russellville, AR 72802

Phone (479) 968-4266

Fax (479) 890-9072

www.i-i-s.net



# Innovative Industrial Solutions

I.I.S.

## Electronic Survey

Value driven search engine allows the user to Query any data stream available in the engine: component, room#, date, etc...

**Open Existing Survey**

Survey:  Template:  Unit:  RWP:

Status:  Work Group:  Note:

Tech:  Frequency:

Date: ☐ None ☐ After ☐ Exact ☐ Before ☐ Between

Component: Tag:  Suffix:  Type:

Location: Building:  Elev:  Room:

Survey	Template	Description	Status	Tech	Date	By
WCNOC-0003-0C	One Line		In-Progress	Survey1,Joe	03-17-2000	
WCNOC-0003-0C	One Line	Hot Machine Shop	In-Progress	Survey1,Joe	03-17-2000	
WCNOC-0003-0C	Brunswick	A DHV NORTH END	Waiting Re	Survey1,Joe	03-16-2000	RA
WCNOC-0003-0C	Brunswick	A DHV NORTH END	Waiting Re	Survey1,Joe	03-16-2000	RA
WCNOC-0003-0C	WCNOC Op (	B DHV NORTH END	Waiting Re	Survey1,Joe	03-09-2000	RA
WCNOC-0003-0C	WCNOC Op (	B DHV NORTH END	In-Progress	Survey1,Joe	03-09-2000	RA
WCNOC-0003-0C	WCNOC Test	A DHV NORTH END	Waiting Re	Survey1,Joe	03-07-2000	RA
WCNOC-0003-0C	One Line	Valve WCNOC 1A located i	Waiting Re	Survey1,Joe	03-07-2000	
WCNOC-0003-0C	WCNOC	A DHV NORTH END	Waiting Re	Survey1,Joe	03-02-2000	RA
WCNOC-0002-0C	Brunswick	A DHV NORTH END	Waiting Re	Survey1,Joe	02-24-2000	RA
IIS_9912.0007	Wolf Creek P	P44/P46 PUMP ROOM	Waiting Re	Survey1,Joe	12-03-1999	RA

Innovative Industrial Solutions, Inc.

2830 Skyline Drive Russellville, AR 72802

Phone (479) 968-4266

Fax (479) 890-9072

www.i-i-s.net

# Innovative Industrial Solutions

I.I.S.

## Electronic Survey

- Capture information that does not require a full Survey
- Customize the Data Field to whatever data the Technician is collecting
- See insert example

**RADS One Line Survey**

Date Query:

**Survey Summary List**

Survey #	Description	Status	Date / Time	Technician
WCNOC-0003-00		In-Progress	03-17-2000	Survey1,Joe J.
WCNOC-0003-00	Hot Machine Shop	In-Progress	03-17-2000	Survey1,Joe J.
WCNOC-0003-00	Valve WCNOC 1A located in the V	Waiting Review	03-07-2000	Survey1,Joe J.
IIS-0002-0001	Dose rates 2-10 mr/hr	In-Progress	02-17-2000	Survey1,Joe J.

**Survey Details**

**General Information**

Survey Number: WCNOC-0003-0001  
 Technician: Survey1,Joe J.  
 Date Time: 03-07-2000 07:43:38  
 Status: Waiting Review  
 DANI #: 03-00-03  
 Unit: 2  
 Rx Power: 100  
 RWP: 21  
 Hot Particle: n  
 Area Posting: Rad & Contam Area

**Dose Rates / Contamination**

Type	Value	E Units
general area	25.0	mrem/hr
gamma contact	120.0	mrem/hr
gamma @30cm	60.0	mrem/hr
100cm smear	2000.0	DPM
large area smear	2000.0	DPM/9 sq.ft.

**Job Location/Description**

Valve WCNOC 1A located in the West end of the Ladies Bathroom

**Instruments Used**

Model	Inst #	Probe#	Cal Due
ROW	01	N/A	03-10-200
RM	02	27	03-10-200

Microsoft Outlook | ACT! - [Ail - Contacts] | Microsoft PowerPoint - [S...] | **RADS One Line Sur...**

Innovative Industrial Solutions, Inc.

2830 Skyline Drive Russellville, AR 72802

Phone (479) 968-4266

Fax (479) 890-9072

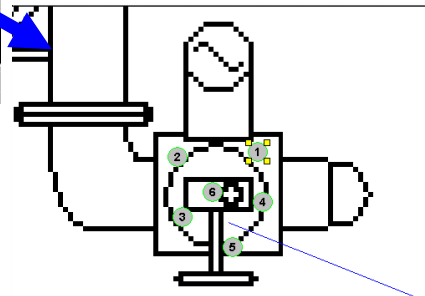
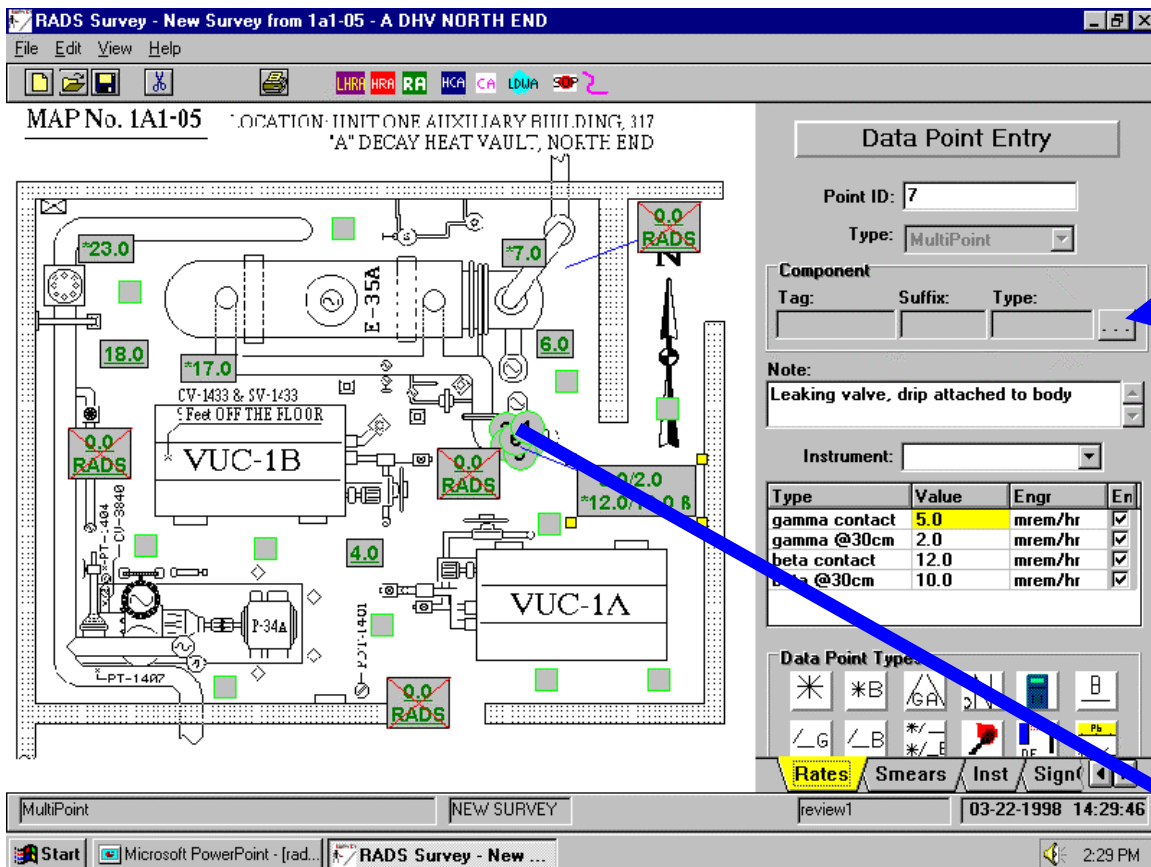
www.i-i-s.net

# Innovative Industrial Solutions

I.I.S.

## Electronic Survey

- Blow up features for details
- Link to Component Data Base
- Basic Window Drawings Tools



Innovative Industrial Solutions, Inc.

2830 Skyline Drive Russellville, AR 72802

Phone (479) 968-4266

Fax (479) 890-9072

www.i-i-s.net

I.I.S.

## Electronic Survey

- Electronic signoff tied to your Network Login
- Text section for Supervisor and Technician Feedback
- All signature has hierarchy privileges assigned to them
- Limited access ability positively controlled

**Sign Off**

Status: **New** Last Status Change: 03-22-1998 14:15:17

**New**  
In-Progress  
Waiting Review

Tech Feedback:

Technician: Review1\_Cindy L. Reviewer:

Inst **SignOff** Upload

review1 03-22-1998 14:52:23

2:52 PM

I.I.S.

## Electronic Survey



STATUS BOARD

- This feature of Survey is displayed by a viewer for the end user (Radiation Worker) this application can be loaded on every desktop on your station
- Many Radiation Workers do not have access to a desk top PC which makes centrally deployed touch-screen units very beneficial to communicate with the Radiation Workers





I.I.S.

## Electronic Survey



STATUS BOARD



- Network compatible system
- Links to IIS Survey and Telemetry
- Multi -Tree ordering system
- Live Time dose rate information
- Live Time airborne conditions
- Graphic overlays make it easier to identify hazards!

# Innovative Industrial Solutions



I.I.S.

## Electronic Survey

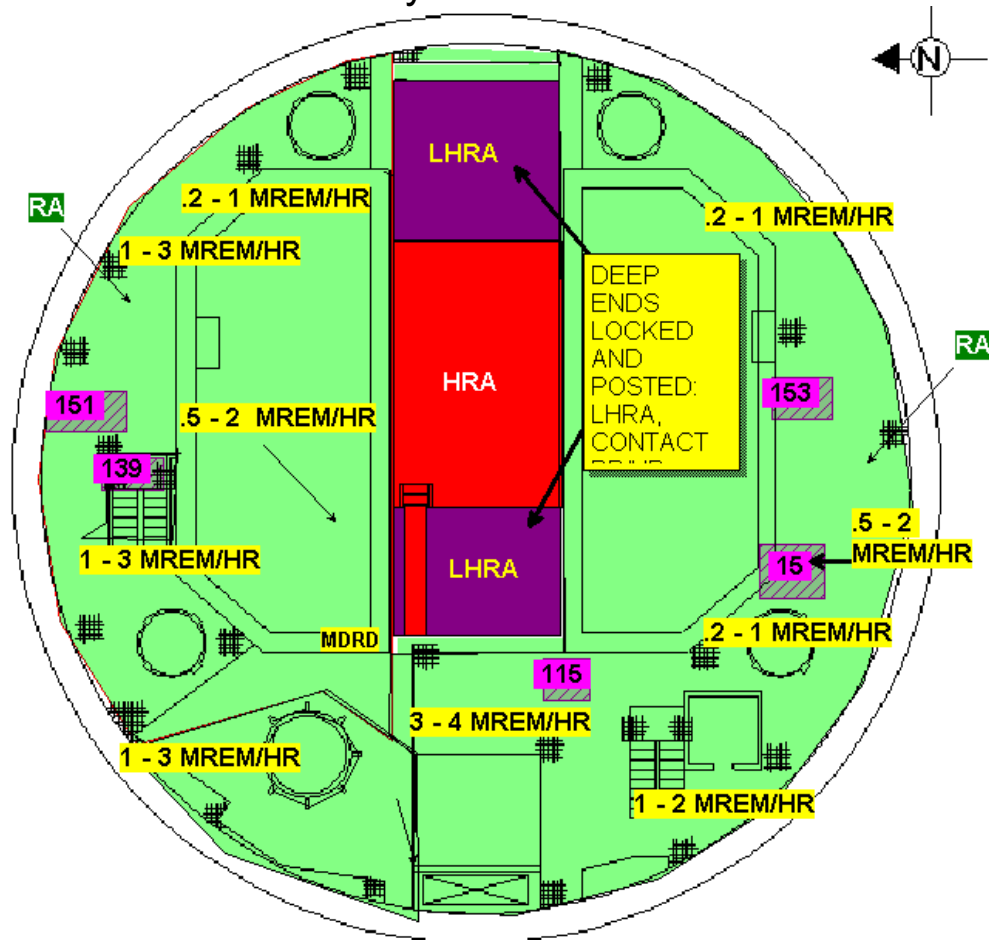


STATUS BOARD



Survey maps are color coded for easy reference

Dose rate information can be added in one of many methods



Telemetry devices can be added to give live-time radiological information

Innovative Industrial Solutions, Inc.

2830 Skyline Drive Russellville, AR 72802

Phone (479) 968-4266

Fax (479) 890-9072

[www.i-i-s.net](http://www.i-i-s.net)

# Innovative Industrial Solutions



I.I.S.

## Electronic Survey



STATUS BOARD

Use for pre-job briefs at  
radiological control points  
by Supervision



Innovative Industrial Solutions, Inc.

2830 Skyline Drive Russellville, AR 72802

Phone (479) 968-4266

Fax (479) 890-9072

[www.i-i-s.net](http://www.i-i-s.net)



# Innovative Industrial Solutions



I.I.S.

## Electronic Survey



STATUS BOARD

Use to increase workers  
radiological knowledge of their  
work area



Innovative Industrial Solutions, Inc.

2830 Skyline Drive Russellville, AR 72802

Phone (479) 968-4266

Fax (479) 890-9072

[www.i-i-s.net](http://www.i-i-s.net)

# Innovative Industrial Solutions



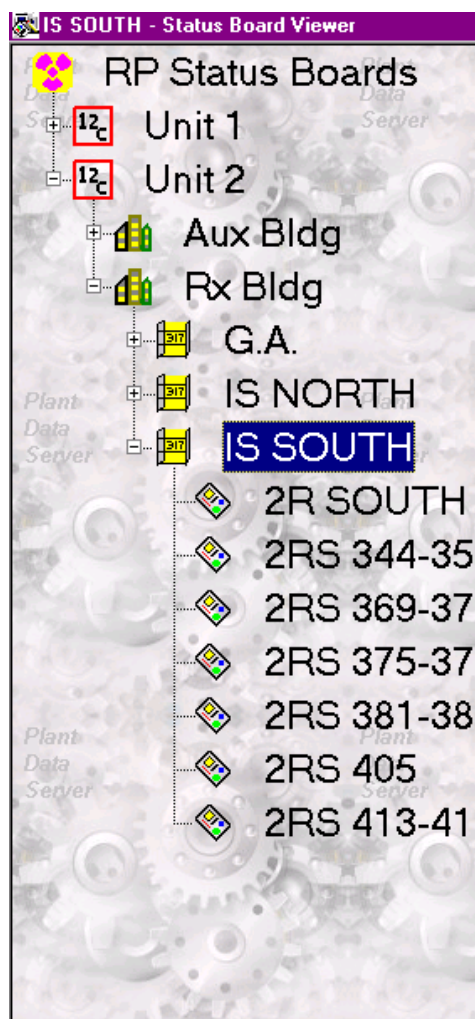
I.I.S.

## Electronic Survey



STATUS BOARD

Surveys are setup in a multi-level tree configuration



Innovative Industrial Solutions, Inc.

2830 Skyline Drive Russellville, AR 72802

Phone (479) 968-4266

Fax (479) 890-9072

[www.i-i-s.net](http://www.i-i-s.net)



# Innovative Industrial Solutions



I.I.S.

## Electronic Survey

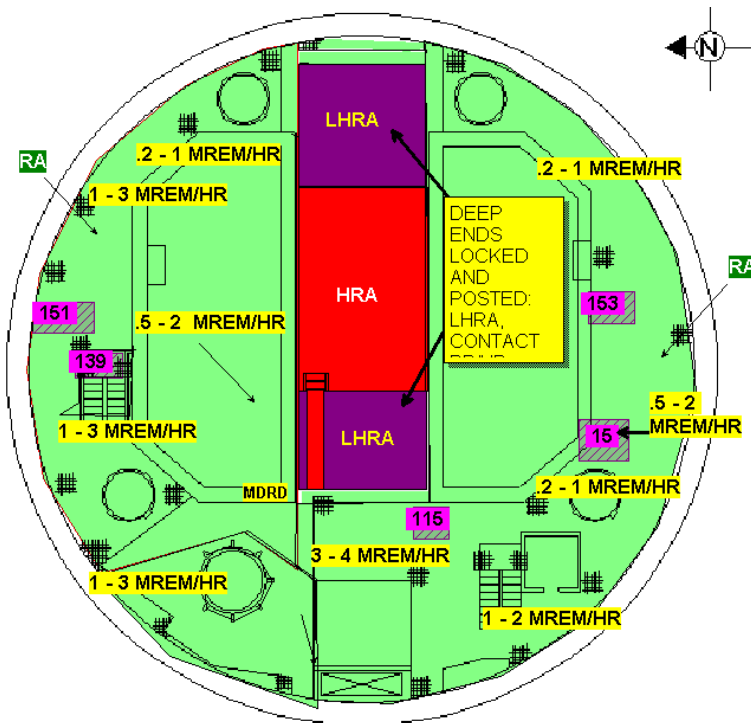
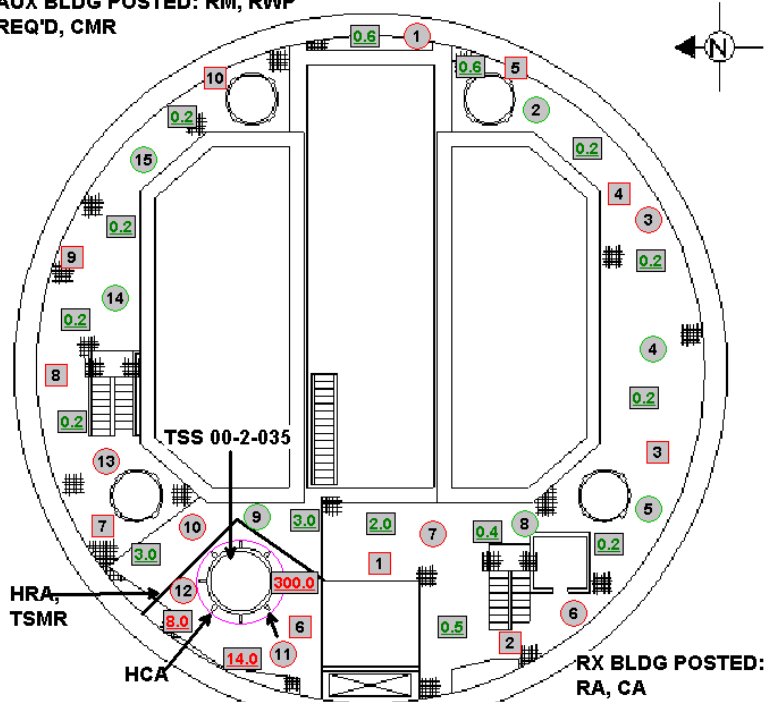


STATUS BOARD



The Statusboard can be updated  
at the same time as the survey is  
documented in the survey program

AUX BLDG POSTED: RM, RWP  
REQ'D, CMR



Innovative Industrial Solutions, Inc.

2830 Skyline Drive Russellville, AR 72802

Phone (479) 968-4266

Fax (479) 890-9072

[www.i-i-s.net](http://www.i-i-s.net)

# Innovative Industrial Solutions



I.I.S.

## Electronic Survey



STATUS BOARD

New Statusboard maps are  
created in the  
RADS survey program



Innovative Industrial Solutions, Inc.

2830 Skyline Drive Russellville, AR 72802

Phone (479) 968-4266

Fax (479) 890-9072

[www.i-i-s.net](http://www.i-i-s.net)

# Innovative Industrial Solutions



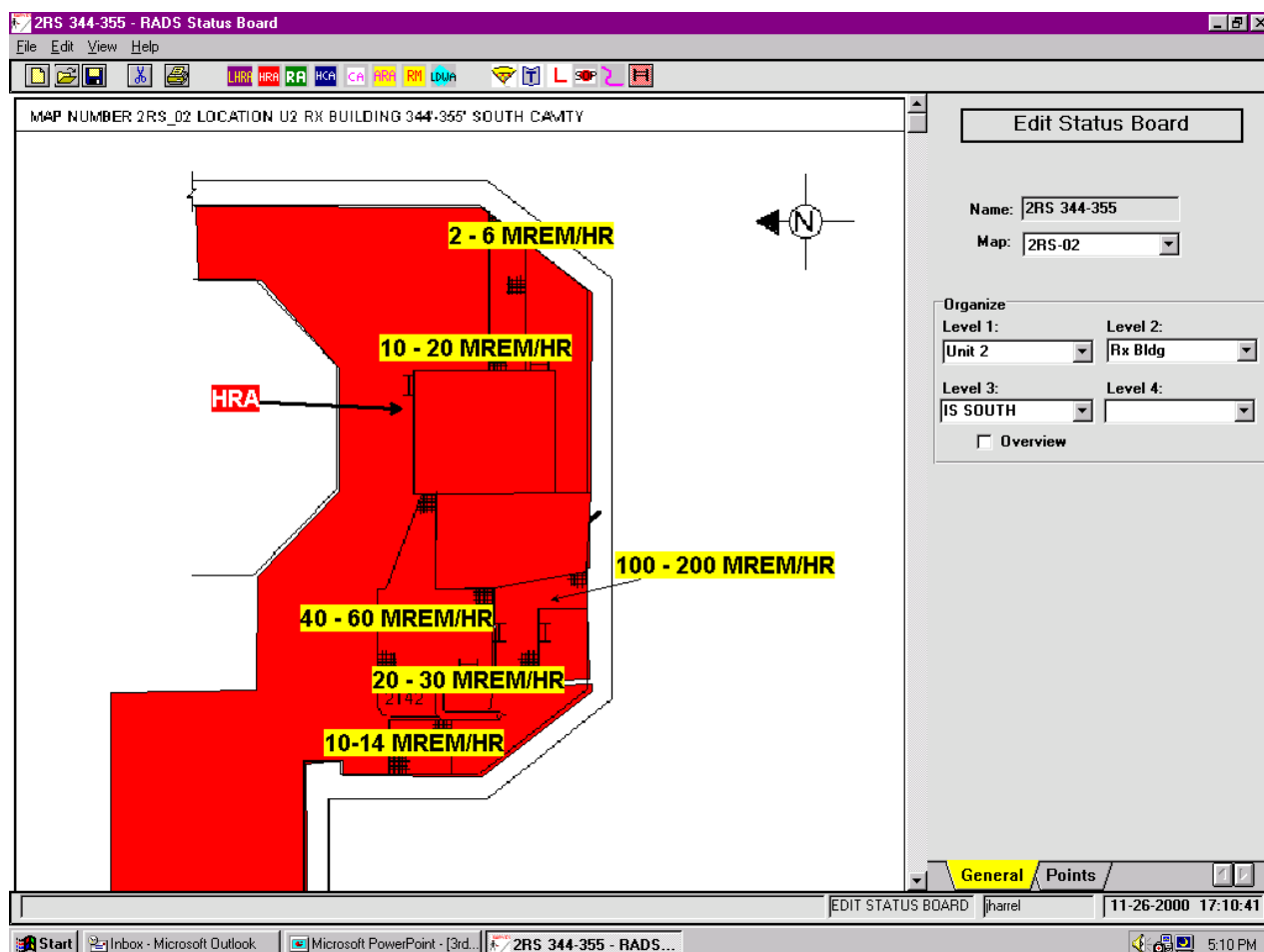
I.I.S.

## Electronic Survey



STATUS BOARD

Editing an existing map is easy and quick. Little time is used for this task



Innovative Industrial Solutions, Inc.

2830 Skyline Drive Russellville, AR 72802

Phone (479) 968-4266

Fax (479) 890-9072

[www.i-i-s.net](http://www.i-i-s.net)