

Innovative Industrial Solutions



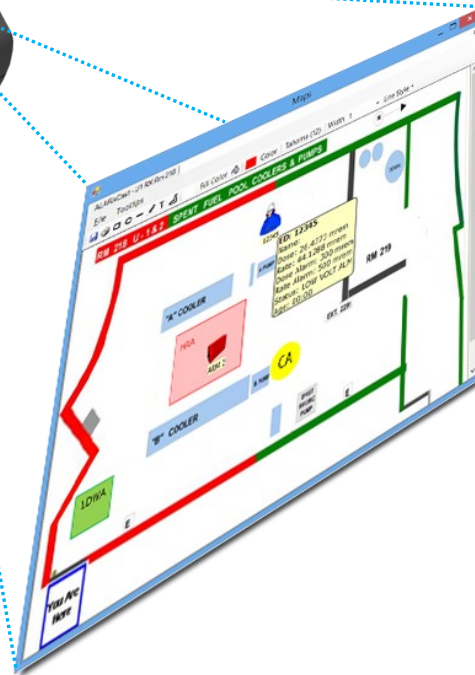
I.I.S.

HMT-1

World's first hands-free Android™ tablet class wearable computer for industrial workers.



- Provides the foundation for Connected Worker programs
- Use it in wet, dusty, hot, dangerous and loud industrial environments
- Rugged head-mounted device, it optionally snaps into safety helmets or attaches to bump caps and can be used with safety glasses or corrective eyewear
- high-resolution micro display fits just below your line of sight and views like a 7" tablet
- optimized for completely hands-free voice control
- remote video calling, document navigation, guided workflow, mobile forms and industrial IoT data visualization



100% Hands Free: Voice based operating system, local speech recognition in loud areas

Unmatched Noise Cancellation: 4 Digital mics and advanced algorithms

Powerful Audio: Integrated speaker and 3.5mm audio jack for use with hearing protection

PPE Compatible: Designed to work with standard hard helmets, bump caps and safety glasses

Full Shift Internal Battery: Field Swappable for continuous use

Outdoor Display: Appears size of 7" tablet, viewable in sunlight

Waterproof: IP66 - Protected against powerful jets of water

Dust Tight: IP66 - Complete protection against the ingress of micro particles

Drop Proof: Resistant to 2 meter drops onto concrete from any angle

Built Rugged: Fully operational from -4° F to 122° F

Innovative Industrial Solutions, Inc.

2830 Skyline Drive Russellville, AR 72802

Phone (479) 968-4266

Fax (479) 890-9072

www.i-i-s.net

Innovative Industrial Solutions



I.I.S.

HMT-1



Hard Hat Mounted



Bump Cap Mounted

Innovative Industrial Solutions, Inc.

2830 Skyline Drive Russellville, AR 72802

Phone (479) 968-4266

Fax (479) 890-9072

www.i-i-s.net

Innovative Industrial Solutions



I.I.S.

HMT-1



I.I.S. WiFi Mobile Camera

WiFi: 802.11 a/b/g/n/ac-2.4GHz - 5 GHz



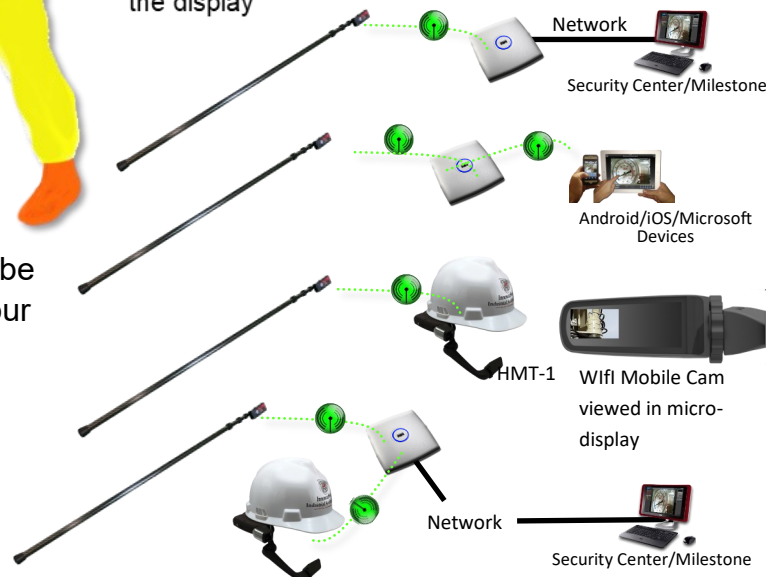
I.I.S. HMT-1

Shown with helmet clip option

Recently deployed in a US Nuclear Plant: During movement of a large component (Heavy Load) an interference caused the process to stop. Due to the fact they would be working under this Heavy Load and it was in a LHRA, it was going to be very difficult to inspect in a timely fashion. Within 5 minutes, they were able to attach the I.I.S. Mobile WiFi Camera to a pole which allowed them to view the obstruction and not enter the LHRA to do so.



Adding the HMT-1 allows personnel to view what the WiFi Mobile Camera sees in the display



The I.I.S. Carbon Fiber Pole with a mounted WiFi Mobile Camera can send it's data directly to the HMT-1 that can be viewed in the display or the HMT-1 when connected to your wifi network, running the Security Center Mobile App, the Mobile WiFi Camera setup in Security Center can be a viewable camera in the HMT-1 display. The HMT-1's on board camera can also be viewed simultaneously in Security Center as well.

Innovative Industrial Solutions, Inc.

2830 Skyline Drive Russellville, AR 72802

Phone (479) 968-4266

Fax (479) 890-9072

www.i-i-s.net

Innovative Industrial Solutions



I.I.S.

HMT-1

Core Platform & Functions	
Operating System	Android 6.0.1 (AOSP) + WearHF™ hands-free interface
Chipset	2.0 GHz 8-core Qualcomm® Snapdragon™ 625 with Adreno 506 GPU - OpenGL ES 3.1 & OpenCL 2.0
Memory	16 GB Internal Storage / 2 GB RAM / MicroSD Slot
Included Applications	Document Navigator, Camera with Barcode Reader, Video Recorder, Media Player
Languages Supported	English, Spanish, French, German, Italian, Portuguese, Russian, Mandarin Chinese, Japanese, Korean
Connectivity & Sensors	
Bluetooth	BT 4.1 LE (Low Energy)
Wi-Fi	802.11 a/b/g/n/ac – 2.4GHz and 5GHz
GPS and Location	GPS, GLONASS, BeiDou, Baidu A-GPS
IMU	9-DOF (3-axis accelerometer, magnetometer, and gyroscope), software enhanced stabilization
Battery	
Capacity	3250 mAh Li-Ion, rechargeable and field swappable
Battery Life	Full shift (9-10 hrs) with typical use
Physical Characteristics	
Weight	380 g
Ruggedization	2 meter drop, IP66, MIL-STD-810G
Dedicated Keys	Power key, application specific Action key
Ports	3.5mm audio, 1 micro-USB, 1 USB Type-C
Boom Arm	Adjust six ways for all head sizes, left or right eye compatible, display flips out of way when not in use
Display	
Type	20° field-of-view, 1 meter fixed focus 24-bit color LCD, 0.33 inch diagonal, outdoor visible
Resolution	WVGA (854x480)
Audio	
Microphones	4 digital microphones with active noise cancellation Accurate voice recognition even in 95 dBA of typical industrial noise
Speaker	Internal 91 dB loudspeaker
Multimedia	
Camera	16 MP 4-axis optical image stabilization, PDAF with LED flashlight
Video	Up to 1080p @30fps. Codecs: VP8, VP9 and hardware encoding support for H.264, H.265 HEVC
Accessories	
Included	Battery Wall Charger, USB Type-C Charging Cable
Optional	Spare Battery, 6 Battery Multi-Charger, Hard Hat Clips, Bump Cap and Tri-Band Strap, Ear Bud Hearing Protection Headphone rated at 33dB noise reduction rating (NRR), Soft Pouch Carrying Case, Semi Rigid Carrying Case, replacement Overhead Straps and Rear Pads

Innovative Industrial Solutions, Inc.

2830 Skyline Drive Russellville, AR 72802

Phone (479) 968-4266

Fax (479) 890-9072

www.i-i-s.net