

I.I.S.

Milestone IP Video Management



Seeing is believing

Scalable surveillance for multiple locations

Milestone XProtect Enterprise is advanced open platform IP video management software (VMS) for medium and large-scale installations. It provides operators with an effective way to monitor an entire surveillance system, including viewing an unlimited number of cameras, controlling access points and tracking moving objects.

XProtect Enterprise provides exceptional situational awareness and has comprehensive features for users who need to quickly respond to incidents and safeguard their

video evidence. Intuitive video monitoring and search tools, efficient alarm handling and flexible viewing clients help users be more productive and quickly create evidence.

XProtect Enterprise also supports endless integration possibilities, allowing users to add customized functionality to create a unique surveillance solution.

Innovative Industrial Solutions, Inc.

2830 Skyline Drive Russellville, AR 72802

Phone (479) 968-4266

Fax (479) 890-9072

www.i-i-s.net

Innovative Industrial Solutions

I.I.S.

Milestone IP Video Management

Advanced interactive monitoring solution

XProtect Enterprise offers optimum situational awareness of an entire surveillance installation. Advanced features ensure moving objects are easily tracked, improved response times and a considerable decrease in the number of false alarms. XProtect Enterprise is powered by three user-friendly interfaces: XProtect® Smart Client, XProtect® Web Client and Milestone Mobile. All XProtect clients are available in 26 languages and are flexible for users with different surveillance skill levels. The clients also help provide a great overview of the installation regardless of the user's location.

XProtect clients



- **XProtect Smart Client** is the primary interface for security operators; it provides unique video search tools such as Smart Search and the Sequence Explorer to quickly locate recordings of incidents
 - **Smart Search** lets users search for motion in one or more selected areas of images from a particular camera
 - The **Sequence Explorer** displays a visual overview of captured video and time intervals from one or more cameras as drag-and-throw image thumbnails to help collect evidence quickly
- **XProtect Web Client** provides flexible access for users to view, playback and export video from any Internet-enabled PC
- **Milestone Mobile** is an application which enables users to view, playback and export video from most mobile devices or tablets

Video Push

Video Push enables Milestone Mobile users to turn their mobile devices into portable evidence collectors. Patrol personnel can document incidents with the device's camera and push video to be viewed directly into XProtect Smart Client. All video evidence collected through this method will be recorded the same way as any other video camera. With Video Push, security staff can stream live events and extend the visibility of central monitoring stations allowing them to act in a more proactive way.

Advanced software with powerful tools:

Customer Dashboard

An online monitoring service that allows us to ensure systems are operating at an optimal level and cameras are connected and recording

**Available with a valid Software Upgrade Plan*

Privacy masking

Enables parts of an image to be concealed in live, play-back and exported video to prevent it from being viewed

Dual streaming

Hardware is optimized with two independent configurable video streams for live and recorded viewing to optimize servers and network infrastructure

Archive on event

Allows the video archive process to be triggered based on a time schedule or an event

Milestone Interconnect

A unique system concept that allows XProtect Enterprise to be interconnected with Milestone's premium software XProtect® Corporate

Innovative Industrial Solutions, Inc.

2830 Skyline Drive Russellville, AR 72802

Phone (479) 968-4266

Fax (479) 890-9072

www.i-i-s.net

Innovative Industrial Solutions

I.I.S.

Milestone IP Video Management

Ensuring the integrity of critical video evidence

XProtect Enterprises has unique capabilities to ensure the integrity and availability of critical video evidence. These features are important for installations whose priority is to collect evidence, ensure it is always available and guarantee it is in a format admissible in courts of law.

No deletion of video recordings

Video recordings will not be able to be deleted from servers configured with specific setting.

Uninterrupted availability of recordings

When a hard disk is removed from the system, recordings can always be viewed through the XProtect® Smart Client - Player that is conveniently stored on the drive.

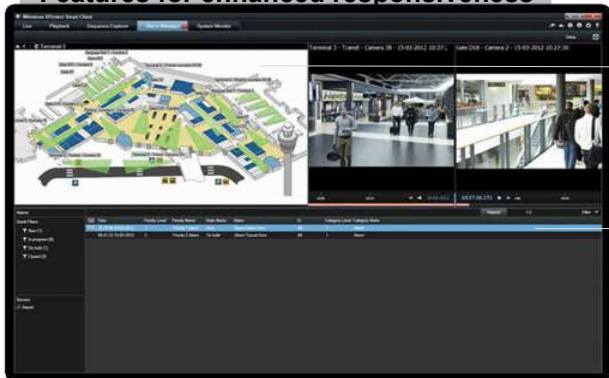
Ability to export video into MKV format

Video is exported in the same format that it was originally recorded in* and can be viewed with standard video player software helping to ensure it is valid in courts of law.

**As long as privacy masking is not enabled and video is recorded in H.264, JPEG or MPEG-4, except for MPEG-4 short header mode.*



Features for enhanced responsiveness



Interactive and multi-layered maps

Provide a comprehensive overview of the entire surveillance installation, allowing quick detection of high-risk areas.

Alarm Manager

Consolidates all alarms for immediate visual verification. A prioritized alarm list provides an overview of active alarms and their severity.

Camera Navigator

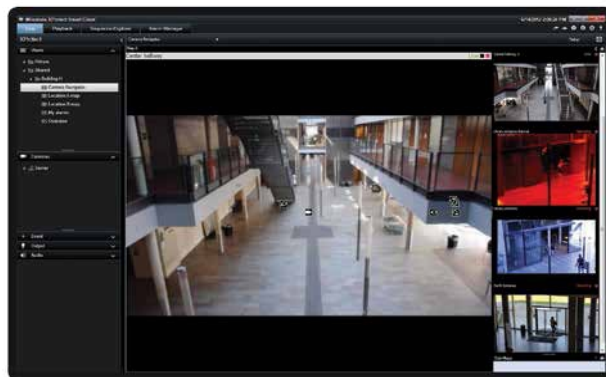
Makes it easy to switch between different surveillance locations. Moving objects are easily tracked since the views of cameras nearby are automatically displayed.

Advanced alert handling

Allows recordings to be triggered by events or motion detection sending email notification.

Integration of applications

Allows third-party integrations such as video analytics and access control while still managing the entire installation through one unified interface



Innovative Industrial Solutions, Inc.

2830 Skyline Drive Russellville, AR 72802

Phone (479) 968-4266

Fax (479) 890-9072

www.i-i-s.net

Innovative Industrial Solutions



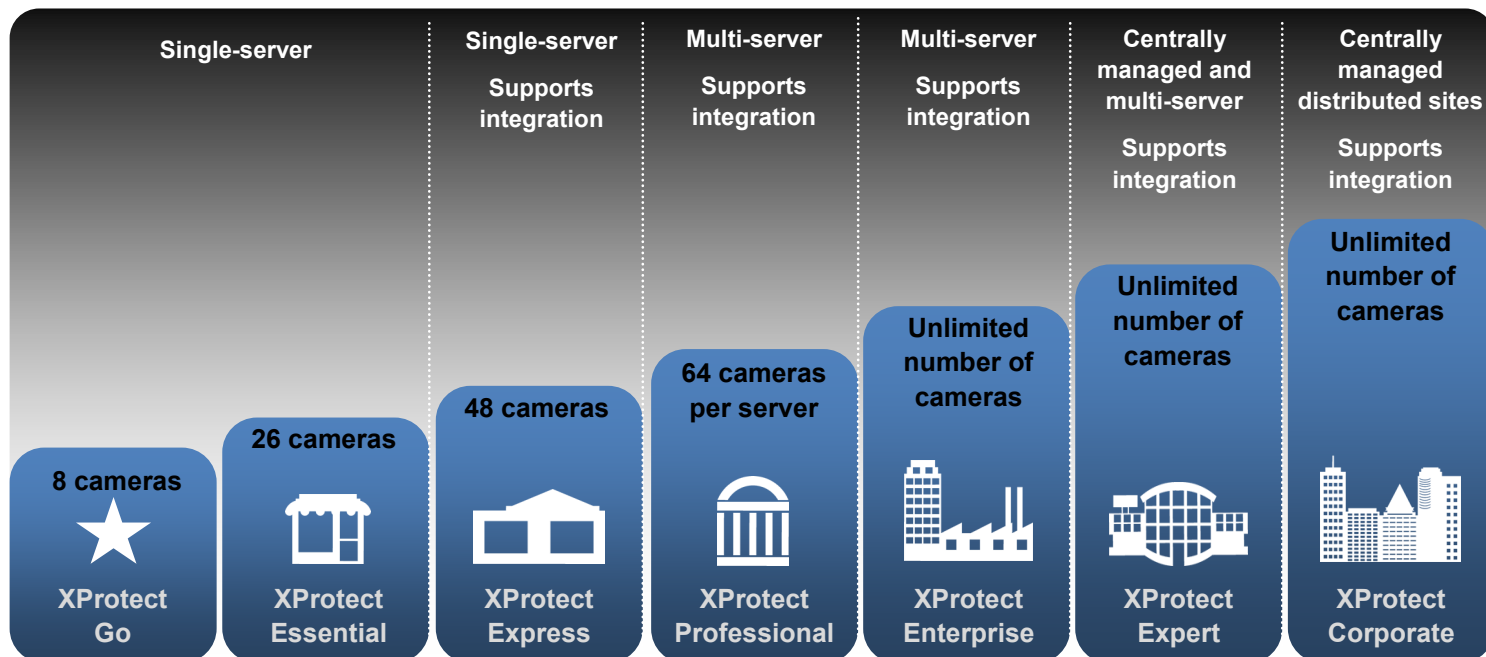
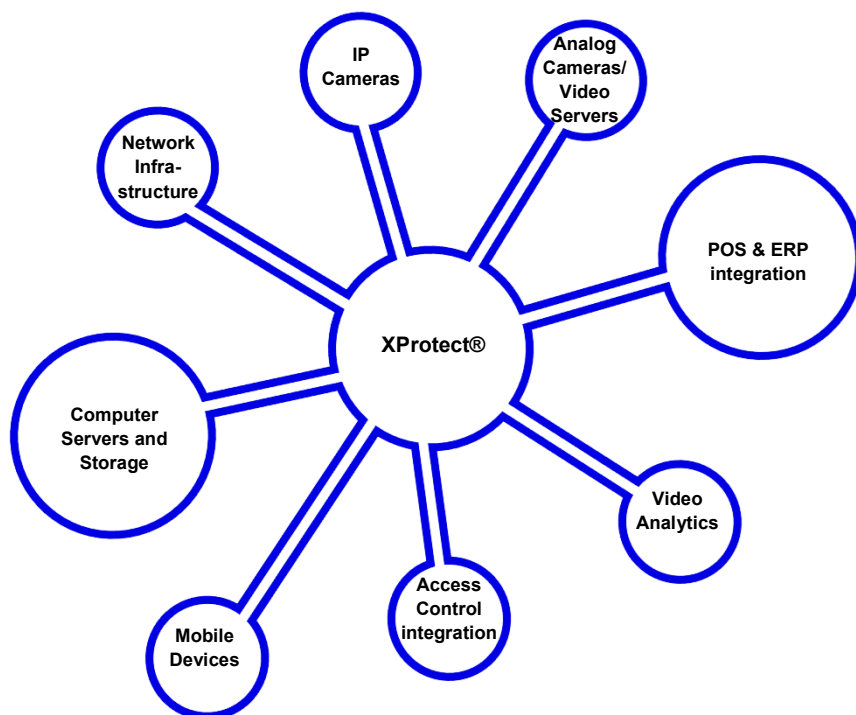
I.I.S.

Milestone IP Video Management

The Milestone Open Platform

A foundation for long-term success

Milestone's XProtect open platform video management software (VMS) integrates with the industry's widest choice in cameras, giving you the freedom to choose equipment according to your needs and budget. Committed to providing a true IP video open platform and freedom of choice, Milestone is proud to be among the first VMS vendors to support and lead the future progress of ONVIF and PSIA standards. Integrate applications and systems into XProtect VMS with the Milestone Integration Platform Software Development Kit (MIP SDK). The open architecture of XProtect, together with the MIP SDK, allows for endless possibilities to add features and functionality for creating powerful, custom surveillance solutions.



Innovative Industrial Solutions, Inc.

2830 Skyline Drive Russellville, AR 72802

Phone (479) 968-4266

Fax (479) 890-9072

www.i-i-s.net

Innovative Industrial Solutions



I.I.S.

Milestone IP Video Management

Feature Overview

XProtect Enterprise server modules

Open platform:

Open application programming interface (API)/software development kit (SDK) support seamless integration with third-party applications

Multi-server and multi-site video surveillance solution:

Unlimited recording of video from IP cameras, IP video encoders and selected digital video recorders (DVRs) with analog cameras

Wide IP camera and device support: Supports more than 2,400 IP cameras, encoders and DVRs from 120 different manufacturers ONVIF™ and PSIA compliant: Supports ONVIF™ and PSIA compliant cameras and devices

Optimized recording storage management:

Unique data storage and archiving solution that combines superior performance and scalability and cost-efficient, long-term video storage

Wide compression technology support:

Supports a variety of compression methods: MJPEG, H.263, MPEG-4 Pt. 2 Simple Profile and Advanced Simple Profile, H.264/MPEG-4 AVC, and MxPEG

Dual streaming:

Hardware use is optimized with two independent, configurable video streams, one for live viewing and one for recording. No client side configuration needed

System configuration wizards:

Guide the user through the process of adding cameras, configuring video and recording, adjusting motion detection and configuring users

Built-in video motion detection:

Independent of camera model

Automatic license activation:

Automatic online or offline activation. 30-day camera license grace period.

Privacy masking:

The privacy masking capability enables administrators to define privacy masks for individual cameras to hide areas in the camera view that must not be visible or recorded in order to comply with local legislation

Easier installation:

Start the installation with a few mouse clicks – all languages and applications in one installer (Management Application supports 11 languages). You can even add components to or remove them from your installation at a later time

Supported by the Software Manager:

Deploy XProtect Enterprise centrally via the Software Manager utility

Support for Customer Dashboard

Resellers can monitor the health of installed systems with a valid and active SUP, so actions can be taken proactively before the issue becomes a problem for the customer. This offers peace of mind to system owners

Evidence collection

With the evidence collection mode, recordings are retained even when a camera is deleted from the system or if a hard disk runs out of space

XProtect Enterprise client modules**Power of choice:**

Use any of the three available clients, XProtect Smart Client, XProtect Web Client and Milestone Mobile

View live video:

Use any client for constant live monitoring

View recorded video:

Use any client to review incidents

Situational awareness:

With support for Maps and Alarms, the XProtect Smart Client offers real-time situational awareness

Common design:

The XProtect clients share common design and basic functionalities, such as camera views, enabling a seamless switch between interfaces as needs require

PTZ Control:

With any of the clients pan-tilt-zoom (PTZ) cameras can be controlled; therefore, suspicious activity can be investigated

Share or export recordings:

Export video in native database format and share with external viewers using the XProtect Smart Client Player. Moreover, instantly share exports between Milestone Mobile and XProtect Web Client using a server side export to avoid moving large files through remote connections

Output control and event triggering: Use any of the clients to activate system events or trigger outputs on the connected devices

Available in 26 languages

Use any of the clients in your preferred language from the list of the 26 languages supported.

Innovative Industrial Solutions, Inc.

2830 Skyline Drive Russellville, AR 72802

Phone (479) 968-4266

Fax (479) 890-9072

www.i-i-s.net

Innovative Industrial Solutions



I.I.S.

Milestone IP Video Management

System Requirements

XProtect Enterprise Server

- Hardware platform:
CPU: Intel® Pentium® 4, 2.4 GHz or higher (Core™ 2 recommended)
RAM: Minimum 2 GB (4 GB or more recommended)
Minimum 10 GB free hard disk space available, excluding space needed for recordings
Ethernet: 1 *Gigabit* recommended
HDD: E-IDE, PATA, SATA, SCSI, SAS (7200 RPM or faster) Onboard GFX, AGP or PCI-Express, minimum 1024 x 768, 16 bit colors
- Operating System:
Microsoft® Windows® 8 Enterprise (64 bit)
Microsoft Windows 8 Pro (64 bit)
Microsoft Windows 7 Ultimate (64 bit)
Microsoft Windows 7 Enterprise (64 bit)
Microsoft Windows 7 Professional (64 bit)
Microsoft Windows Server 2012 (64 bit): Standard and Datacenter.
Microsoft Windows 2008 R2 (64 bit): Standard, Web, High Performance Computing (HPC), Enterprise and Datacenter
Microsoft Windows Server 2008 (64 bit)
Microsoft Windows Vista Business (64 bit)
Microsoft Windows Vista Enterprise (64 bit)
Microsoft Windows Vista Ultimate (64 bit)
- Software:
Microsoft .NET 4.5 Framework
Microsoft .NET 4.0 Framework
DirectX 9.0 or newer

XProtect Enterprise Clients

XProtect Smart Client R2 and XProtect Smart Client-Player

- Hardware platform:
CPU: Intel Core2™ Duo, minimum 2.4 GHz or higher (more powerful CPU recommended for XProtect Smart Clients running a high number of cameras and multiple views and displays)
RAM: Minimum 2 GB (higher RAM recommended for XProtect Smart Clients running high number of cameras and multiple views and displays)
Network: Ethernet (100 Mbit or higher recommended)
HDD: Minimum 1 GB free
Graphics Adapter: AGP or PCI-Express, minimum 1024 x 768 (1280 x 1024 recommended), 16 bit colors
- Operating system:
Microsoft® Windows® 8 Enterprise (32 bit or 64 bit)
Microsoft Windows 8 Pro (32 bit or 64 bit)

Microsoft Windows 7 Ultimate (32 bit or 64 bit)
Microsoft Windows 7 Enterprise (32 bit or 64 bit)
Microsoft Windows 7 Professional (32 bit or 64 bit)
Microsoft Windows Server 2012 (64 bit): Standard and Datacenter.
Microsoft Windows Server 2008 R2 (64 bit): Standard, Web, High Performance Computing (HPC), Enterprise, and Datacenter.
Microsoft Windows Server 2008 (32 bit or 64 bit)
Microsoft Windows Server 2003 (32 bit or 64 bit)
Microsoft Windows Vista Ultimate (32 bit or 64 bit)
Microsoft Windows Vista Enterprise (32 bit or 64 bit)
Microsoft Windows Vista Business (32 bit or 64 bit)
Microsoft Windows XP® Professional (32 bit or 64 bit)

- Software:
Microsoft .NET 4.0 Framework
DirectX 9.0
Windows Help (WinHlp32.exe)

XProtect Web Client 2013 R2

- Hardware platform:
CPU: Intel Core2™ Duo, minimum 2.4 GHz or higher (more powerful CPU recommended for XProtect Web Clients running high number of cameras or multiple instances)
RAM: Minimum 2 GB (higher RAM recommended for XProtect Web Clients running a high number of cameras or multiple instances)
Network: Any connection to the XProtect Mobile server (10 Mbit or higher recommended)
Screen: WXGA or higher recommended (1280 x 720), 16-bit colors
HDD: Minimum 1 GB free on machine where the XProtect Mobile server is installed (needed for exports)
- Browsers:
Microsoft Internet Explorer® 9 or later Safari® 5 or later
Google Chrome™ 16 or later Mozilla® Firefox® 11 or later

Milestone Mobile 2013 R2

- Applications available for download in the App Store and Google Play
- Hardware platform: Android 2.2 or higher or iOS 6.0 or higher

Innovative Industrial Solutions, Inc.

2830 Skyline Drive Russellville, AR 72802

Phone (479) 968-4266

Fax (479) 890-9072

www.i-i-s.net

I.I.S.

Milestone IP Video Management

Licensing structure

Base server license

- An XProtect Enterprise base server license is mandatory for installing the product. The product may be installed on an unlimited number of computers designated as master servers per software license code (SLC). The product may be installed on an unlimited number of slave server computers per designated master server using the same SLC
- The base server license contains the XProtect Enterprise server module and XProtect Mobile server, plus the client modules XProtect Smart Client, XProtect Smart Client – Player, XProtect Web Client and Milestone Mobile

Camera license

- To connect a camera, one license per camera channel is required. In total, for all copies of the product installed under this license, the product may only be used with as many cameras as you have purchased camera licenses for
- Video encoders and DVRs connected to multiple analog cameras require a camera license per channel to operate
- I/O devices require a camera license per I/O device
- An unlimited number of camera licenses may be purchased
- To extend the installation with additional camera licenses, the SLC is required

Client License

- The XProtect Enterprise client modules: XProtect Smart Client, XProtect Smart Client – Player, XProtect Web Client and Milestone Mobile do not require additional licenses and can be installed and used on any number of terminals